



### Cornish Lithium Funding

Cornish Lithium secured an initial investment of £53.6 million from a group of leading institutional investors led by the UK Infrastructure Bank alongside The Energy & Minerals Group (EMG) and TechMet. This funding package is expected to significantly accelerate progress toward the creation of a domestic supply of battery grade lithium compounds. The investment signals a significant boost for Cornwall to enable the County's development as an industrial cluster for lithium extraction. The investment will support the UK's transition to Net Zero and boost regional and local economic growth. There is also a potential second stage to the financing which would raise an additional c. £168 million to fund the construction of our hard rock project. Local people have also had the opportunity to invest in the Company through our crowdfunding campaigns to support the potential renaissance of Cornwall's mining industry that our modern mineral extraction techniques represent.

### United Downs

The United Downs test site is hosting various Direct Lithium Extraction (DLE) technologies to see which processing techniques work best with Cornish geothermal waters. This equipment selectively removes lithium from the water, which can then be concentrated into a lithium solution, which can be used in the production of batteries. Alongside DLE we are also testing technologies such as reverse osmosis to concentrate the lithium solutions to create a saleable product.

Currently water from the Twelveheads borehole, drilled in 2022 /2023, is being tested at the United Downs site to trial a specific DLE technology. These waters are being extracted from Twelveheads using an electric submersible borehole pump and transported to United Downs via one or two tankers a week.



Scan the QR code to visit our website and find out more!

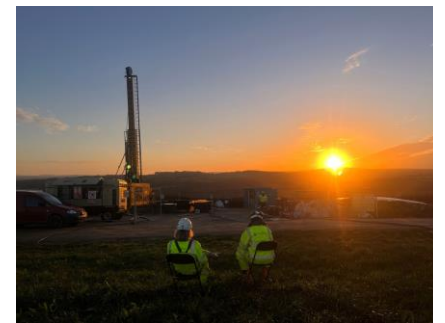
### Blackwater

Cornish Lithium have been exploring for lithium from geothermal waters near Blackwater. The exploration drilling has finished, reaching a depth of c.1800m.

Testwork at this site finished in October and includes geochemical analysis of the waters. This work will establish the levels of lithium and other dissolved solids found in these waters flowing at depth. The temperature of the water is also analysed, as water around 2km deep is normally between 70-80 degrees Celsius. The site is being reinstated, and the data and samples collected from the testwork will be analysed at our United Downs site.



Geothermal waters at the Blackwater site



### Opportunities

Alongside site visits and tours, Cornish Lithium provides work experience, placements and internship positions for schools, colleges and universities. There are various employment positions available as the company expands, with a wide range of skills desired.



If you are interested in placement or employment opportunities please have a look at our website and contact us on [careers@cornishlithium.com](mailto:careers@cornishlithium.com)

The photo shows one of our Year in Industry students working alongside a site technician to run the DLE Pilot Plant at United Downs.